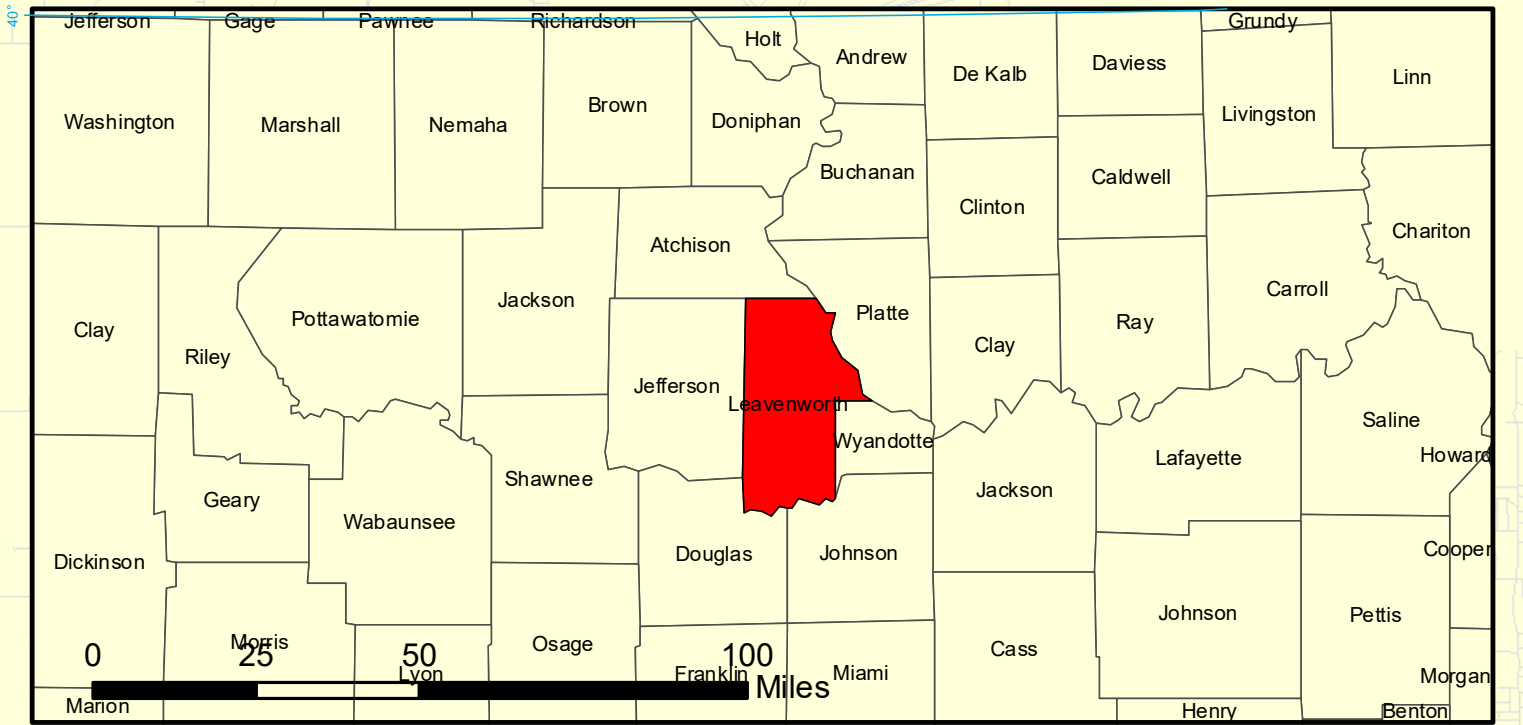
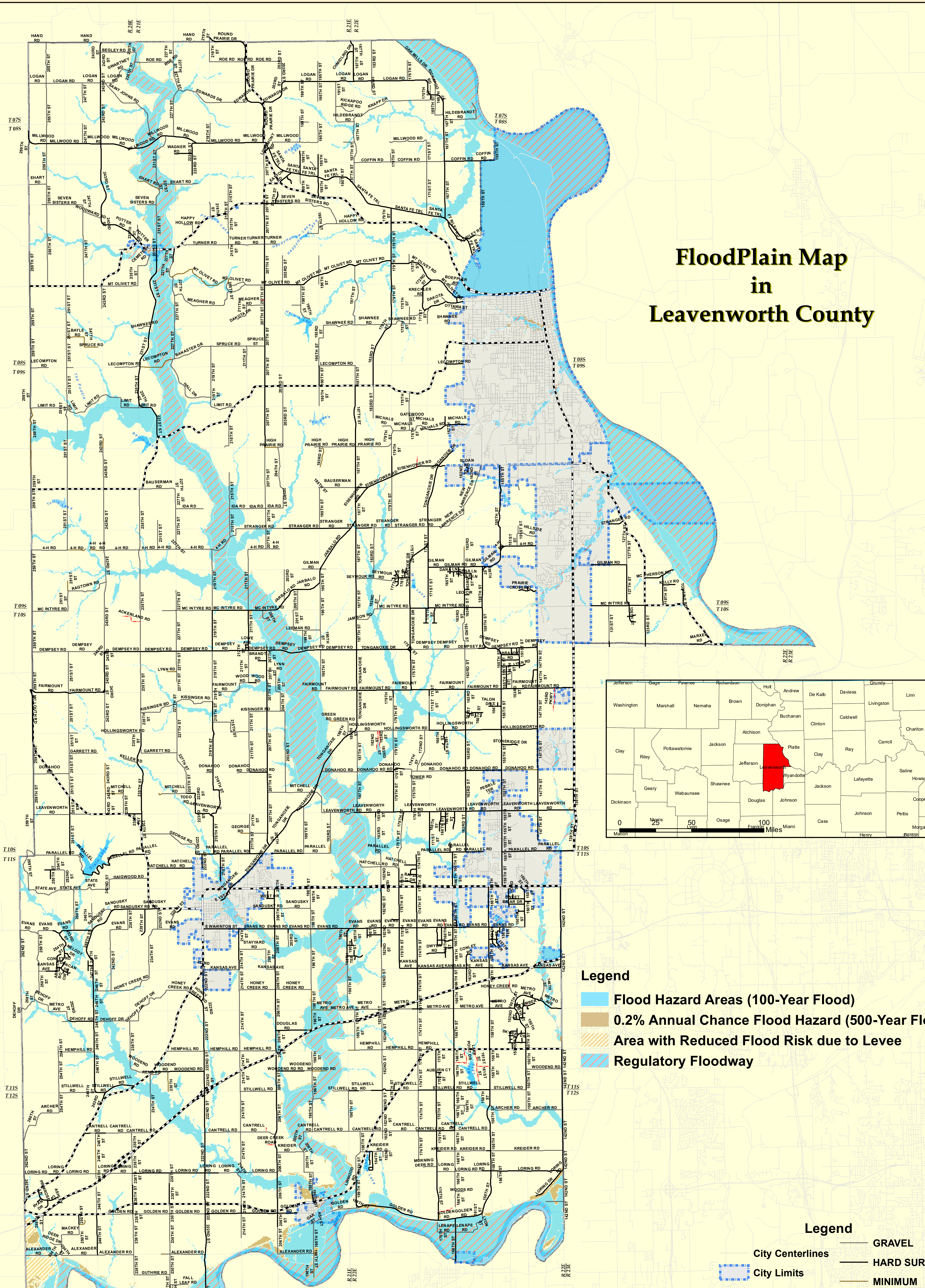




LEAVENWORTH COUNTY KANSAS 2025



FloodPlain Map in Leavenworth County



- Legend**
- Flood Hazard Areas (100-Year Flood)
 - 0.2% Annual Chance Flood Hazard (500-Year Flood)
 - Area with Reduced Flood Risk due to Levee
 - Regulatory Floodway

- Legend**
- City Centerlines
 - City Limits
 - Sections
 - County Boundary
 - GRAVEL
 - HARD SURFACE
 - MINIMUM
 - PRIVATE
 - State Maintained

Projection: NAD 1983 State Plane Kansas 1501 (US Feet)
 Disclaimer: Map is projected in real-world coordinates.
 However, it is not intended for legal purposes.
 Measurement accuracy is not guaranteed.